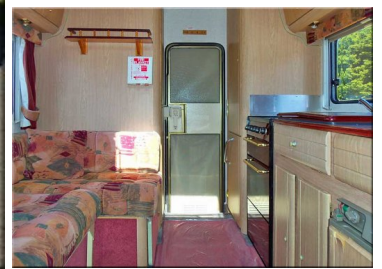


2000(X) Autocruise Vista 2001 Peugeot

**SOLD**



**Engine:** Diesel  
**Gearbox:** Manual  
**Capacity:** 1905cc  
**Mileage:** 74,669  
**BHP:** 92bhp  
**Length:** 4850mm  
**Width:** 2350mm

**Wellsbridge Motorhomes**  
 Wells Bridge  
 Ramsey Forty Foot  
 Huntingdon  
 Cambridgeshire, PE26 2XJ

SERVICE HISTORY	2 BERTH
POWER STEERING	AWNING
TV AERIAL	SWIVEL SEATS
RADIO/CD	MANUALS PACK
SERVICE HISTORY	240/12V
BLOWN AIR HEATING	TV POINT
LOUNGE/DINER	L SOFA
SIDE KITCHEN	COOKER
4 BURNER HOB	FRIDGE/ICEBOX
SINK/DRAINER	WINE CABINET
REAR WASHROOM	SHOWER
TOILET	HEKI ROOF-LIGHT
WARDROBE	CURTAINS
FLY SCREENS	BLINDS

A 2 berth RHD Manual 1.9TD Lo-Profile Motorhome (2000) with PAS, 2.5m awning, Tv aerial. Driver and passenger swivel seats, over-cabin storage, cabin curtains, radio/CD player. Central lounge/dining area with an L shaped sofa and a removable table. The side kitchen has a fully fitted gas cooker with 4 gas hobs, small fridge with ice box, sink and drainer, cutlery drawer and cabinets, drinks cabinet. Compact rear washroom with a shower, sink, wc and mirrored cabinet. Rear door access with pull-out step, window curtains, screens and blinds, large roof-light, carpeted flooring, ample storage, wardrobe. Air blown